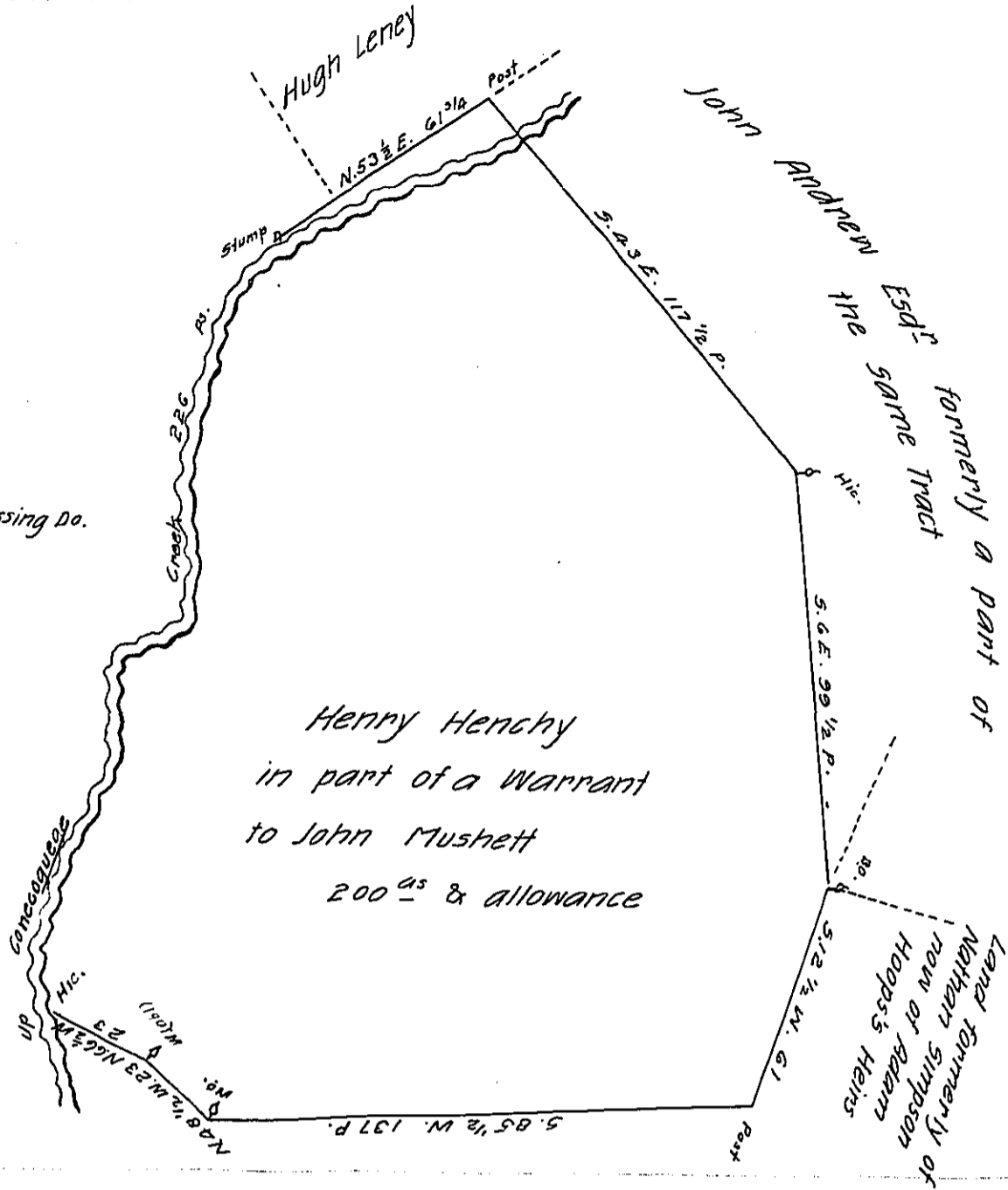


Courses on the Creek with 2 1/4 as allow for Jutts

- N. 24 W. 12
- N. 9 E. 13
- N. 21 E. 47
- N. 17 W. 14
- N. 43 E. 7
- N. 81 E. 16
- N. 33 E. 8
- N. 6 E. 16
- N. 26 W. 6 1/2
- N. 11 W. 12 1/2
- N. 3 W. 17
- N. 15 E. 19
- N. 22 E. 12
- N. 48 E. 18
- N. 42 W. 8 Crossing Do.  
226 P.



James Fox

A Draft of a Tract of Land situate in Guilford Township in the County of Franklin (formerly in the County of Lancaster) containing two hundred acres and the allowance of six p. Cent for Roads & ca. Being part of a Tract of 746 acres & 35 perches and allowance re-surveyed, in pursuance of a Warrant granted to John Mudgett bearing date the 10<sup>th</sup> day of August 1745

April 29<sup>th</sup> 1793

Matt<sup>W</sup> Henderson D.S.

To Daniel Brodhead Esq<sup>r</sup>  
Surveyor General of Pennsylvania

N. B. I am lately informed that Joseph Patton the former owner has not yet conveyed to Henry Henchy, and therefore will require the Patent for the above in his own name. M. H.

IN TESTIMONY that the above is a copy of the original remaining on file in the Department of Internal Affairs of Pennsylvania, made conformably to an Act of Assembly approved the 16th day of February, 1833, I have hereunto set my Hand and caused the Seal of said Department to be affixed at Harrisburg, this third day of January 1906

*Loac P. Brown*  
Secretary of Internal Affairs.